



# PLAINS PRESBYTERIAN

## 18<sup>TH</sup> SEPTEMBER 2022



God, whose love is boundless.

### CONTACTS FOR THE PARISH

#### Parish Clerks:

Liz Depree 021889341; [l.depree@interlead.co.nz](mailto:l.depree@interlead.co.nz)

Annette Syme 3030803; [annettesyme@icloud.com](mailto:annettesyme@icloud.com)

Rev. Johanna Warren [jowarren@atrix.co.nz](mailto:jowarren@atrix.co.nz)

3070200 Mobile; 0224589603

#### St. John's Methven:

Joan & Alex Wright 3028668; [jmacw5442@gmail.com](mailto:jmacw5442@gmail.com)

#### Mayfield & Staveley:

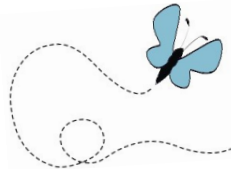
Annette Syme 3030803; [annettesyme@icloud.com](mailto:annettesyme@icloud.com)

#### St. Andrew's Rakaia:

Dorothy Knight 3027595; [dottsknights@gmail.com](mailto:dottsknights@gmail.com)

#### Administrator:

Miranda Addis 3027023; [plainsoffice@gmail.com](mailto:plainsoffice@gmail.com)



#### Kindness Account

Plains Presbyterian Account

Number:

02 0868 0091269 00

#### Stay Connected With Us!

Find us on Facebook

[Facebook.com/](https://www.facebook.com/PlainsPresbyterianParish)

[PlainsPresbyterianParish](https://www.plainspresbyterian.co.nz)

Website:

[PlainsPresbyterian.co.nz](https://www.plainspresbyterian.co.nz)

**Celebrating Spring! The Lord is here. Kei konei te Ariki  
God of all creation, you shine on us and within us.**

### WORSHIP SERVICES

|                        |          |                                      |                     |
|------------------------|----------|--------------------------------------|---------------------|
| 18 <sup>th</sup> Sept. | 9:30 am  | St. Andrew's Rakaia (Spring Flowers) | Rev. Silvia Purdie  |
|                        | 10:30 am | St. John's Methven                   | Rev. Laurence Ennor |
| 25 <sup>th</sup> Sept. | 9:30 am  | St. Andrew's Rakaia                  | Rev. Laurence Ennor |
|                        | 10:00 am | Staveley combined with St. John's    | Pastor Paul Eden    |
| 2 <sup>nd</sup> Oct.   | 10:30 am | St. John's Methven                   | Rev. John Titlow    |
| 9 <sup>th</sup> Oct.   | 9:30 am  | St. Andrew's Rakaia                  | Rev. John Titlow    |
|                        | 10:30 am | St. John's Methven                   | Rev. Silvia Purdie  |
| 16 <sup>th</sup> Oct.  | 9:30 am  | St. Andrew's Rakaia                  | Rev. Silvia Purdie  |
|                        | 10:30 am | St. John's Methven                   | Rev. Laurence Ennor |

## PLAINS PRESBYTERIAN NOTICES

**Online Worship:** Here is a link for Online Worship with St. David's Ashburton: <https://www.youtube.com/watch?v=OIThP3Ubiw>

**Alpine Spring Gathering—** Click the following link for more info; <http://www.plainspresbyterian.co.nz/wp-content/uploads/2022/09/Spring-Gathering-Alpine-Presbytery.pdf>

**PCANZ One Conference:** Click the following link for more info; [http://www.plainspresbyterian.co.nz/wp-content/uploads/2022/09/One-Conference-A5-flyer\\_HIGH-RES-1.pdf](http://www.plainspresbyterian.co.nz/wp-content/uploads/2022/09/One-Conference-A5-flyer_HIGH-RES-1.pdf)

### Building the Church For Today and Tomorrow Conference

**2022—In Christchurch** at Oxford Terrace Baptist Church

288 Oxford Terrace, Christchurch Central City, Christchurch on 26th October 2022. Day session: 8:30am - 4:30pm

Night session: 6:30pm - 9:00pm. **Click the following link for more information:** <http://www.plainspresbyterian.co.nz/wp-content/uploads/2022/09/Conference22-1.pdf>

### St. John's Methven

Thursday 15th September | 3:15 pm | **St. John's Brick Club**

### St. Andrew's Rakaia

Tuesday 20th September | 10:00 am | **Rakaia Fit Kidz.**

Welcome to all preschoolers!

1:00 pm | **Steady As You Go**

Saturday 1<sup>st</sup> October 9:00 am—1:00 pm **PLANTS 4 U @ RAKAIA**

**Find this event with on our Facebook Page!**

*Setting up at the Church Hall on 28th September.*

Spring Flower Service at St. Andrew's this Sunday! With Rev Silvia Purdie. **Flower Parade ~ Bringing in the Flowers** at 9:30AM singing of Morning is Broken'. Children's involvement, singing, story, action time, prayer, movie time with Miranda. **Welcome!**

